

the Watershed

AWRA Tri-Section Meeting, March 21, 2003 Sandestin Golf and Beach Resort, Destin Florida

BOARD OF DIRECTORS

Rand Edelstein, Jr., P.G.
President
Tallahassee

Michael D. Mesiano
Vice President
Jacksonville

Allan H. Biddlecomb, P.G.
Treasurer
Gainesville

Roger Rumenik, P.G.
Secretary
Tallahassee

William C. Stimmel
President-2002
Orlando

Michael G. Cullum, P.E.
President-2001
St. Augustine

Neil Aikenhead, P.E.
Jacksonville

Ron Edenfield, P.E.
Fort Myers

John J. Fumero, Esq.
West Palm Beach

Ron Hamel
LaBelle

Robert W. Higgins, P.E.
West Palm Beach

Donald McEwen
Havana

Gail L. Murray, P.G.
Tequesta

Paul W. O'Neil, Jr., P.E.
Tampa

Patrick R. Victor, P.E.
Jacksonville

Cathleen Vogel
Miami

David R. Watt, P.E.
Palatka

Jay W. Yingling
Tampa

Sanford N. Young
Tallahassee

Bay and Interstate River Management, Water Supply, & Water Issues in Northwest Florida

TECHNICAL PROGRAM: The March meeting provides the opportunity to collaborate with the Florida, Georgia, and Alabama Sections of the AWRA as a Tri-Section meeting that focuses on shared issues. These issues include concerns of the quality and quantity of streamflows from the interstate rivers that flow from Alabama and Georgia to northwest Florida, and their impact as a resource to some of Florida's bays. The technical program will include two panels of experts from the tri-states to preside over discussions on bay and interstate rivers management, water supply, and other water issues. The water issues in northwest Florida are not new but may appear foreign to the large-city populace in peninsula Florida.

LOCATION & ACCOMMODATIONS: The location of the meeting takes us deep into Florida's panhandle where no meeting has gone before, and ventures into the confines of the Sandestin Golf and Beach Resort, a 2,400-acre paradise flanked by the Choctawhatchee Bay to the north and the Gulf of Mexico to the south. Sandestin is located between Panama City and Pensacola in southern Walton County.



The meeting room and dinner will be held at Beachside I, located at the southside of the Resort on the Gulf. The recommended hotel on site is the Bayside Inn that overlooks the scenic Choctawhatchee Bay. A limited number of bayview rooms have been reserved so make your reservations early! The room rate at the Bayside Inn is \$119. Reservations can be made by calling 800-277-0800 or 800-267-8150 (be sure to mention AWRA). The reservation deadline was **February 3; rooms still available.**

Several other alternative accommodations and information on what to see and do at the Sandestin Resort can be found at www.sandestin.com. We look forward to seeing you in Sandestin.

AMERICAN WATER RESOURCES ASSOCIATION
Florida-Alabama-Georgia Tri-Section Meeting, March 21, 2003
Sandestin Golf and Beach Resort
Destin, Florida

**Bay and Interstate River Management,
Water Supply, and Water Issues
in Northwest Florida**

NOTE: ALL TIMES ARE CENTRAL TIME ZONE

Friday, March 21

12:00 – 1:00 **Florida Section, AWRA Board of Directors meeting** - members invited
Beachside I, Ground-Floor

12:00 **Registration**

1:30 – 6:30 **Technical Session (Welcome and Introductions)**
Beachside I, Ground-Floor

1:30 – 4:00 **Panel I: Bay Management in Northwest Florida**

Panel Moderator: *Lee Marchman, NFWWMD*

Mobile Bay - *Dr. George F. Crozier, Director, Dauphin Island Sea Lab*

Pensacola Bay – *Paul Thorpe, NFWWMD*

Choctawhatchee Bay - *Ross Hamilton, Executive Director,
Choctawhatchee Bay Alliance*

St. Andrews Bay – *Mike Bream, U.S. Fish & Wildlife Service*

Apalachicola Bay – *Apalachicola Esturine Program (FDEP)*

Ochlockonee Bay – *Sean McGlynn, President, McGlynn Laboratories*

Break

4:30 – 6:30 **Panel II: Interstate River Issues**

Panel Moderator: *Sandy Young, Biological Research Associates*

Choctawhatchee/Pea Rivers – *Eric Livingston, FDEP*

Tri-State River Compact (ACF)

Apalachicola River – *Doug Barr, Executive Director, NFWWMD*

Chattahoochee River – *T B A*

Flint River – *Robert Kerr, Division Director, Georgia Dept of Natural Resources*

Ochlockonee River – *T B A*

6:30 – 7:30 **Social Hour – Cash Bar**

7:30 – 9:30 **Dinner Buffet and Keynote Speaker**

Meeting Registration Form

Destin, Florida

AWRA Tri-Section Meeting

March 21, 2003

Name: _____ Affiliation: _____

Mail Address: _____

Phone: _____ E-mail: _____

Guest Name(s): _____

Registration includes dinner:

<u> </u>	#	X \$55 Registration Fee	=	<u> </u>	\$
<u> </u>	#	X \$35 Guest/Spouse	=	<u> </u>	\$
<u> </u>	#	X \$20 Student	=	<u> </u>	\$
<u> </u>	#	X \$10 for 2003 FL Section Membership Dues	=	<u> </u>	\$
			TOTAL:	<u> </u>	\$

Buffet Dinner:

- ✓ Grilled Salmon, Ratatouille stuffed Chicken, and Braised Beef Stew
- ✓ Saffron Pepper Rice and Roasted New Potatoes
- ✓ Steamed Seasonal Vegetables

[] **Special Diet** (indicate): _____

Please mail registration fees and dues to:

Roger Rumenik
U. S. Geological Survey
227 N Bronough St., Suite 3015
Tallahassee, Florida 32301

Make checks payable to: **AWRA Florida Section**

IMPORTANT DATES

Meeting Registration DeadlineMarch 7, 2003

Hotel Reservation DeadlineNow

Sponsors: Biological Research Associates
URS Griner Woodward-Clyde
ENSR International

Sandestin Golf and Beach Resort

MAPS AND DIRECTIONS

Getting Here From There

Sandestin Golf and Beach Resort is a hidden treasure, but it is actually very easy to find. To venture to this Gulf Coast destination by air, there are four convenient airports which service the Destin, Fla., area.

- Destin Airport (eight miles from Sandestin) is accessible to private jets and planes.
- Okaloosa Regional Airport Fort Walton Beach (24 miles)
- Panama City International Airport (40 miles)
- Pensacola Regional Airport (65 miles)

Airports are served by Delta, Northwest, US Air, American Eagle, Continental, Delta ASA and AirTran with more than 60 flights daily into the region.

Atlanta	330	Jacksonville	283
Baton Rouge	318	Louisville	617
Birmingham	253	Memphis	619
Boston	1,445	Miami	729
Chicago	914	Minneapolis	1,314
Cincinnati	720	Montreal	1,578
Cleveland	976	Nashville	445
Columbus	831	New Orleans	269
Dallas	770	New York	1,218
Detroit	973	Orlando	379
Houston	595	St. Louis	748
Indianapolis	731	Toronto	1,191

Sandestin is located between Pensacola and Panama City on Florida's Gulf Coast, and is 33 miles from the intersection of I-10 and US 331. For on-site locations of Beachside I, where the technical sessions and dinner will be held, and the Bayside Inn, view the Interactive Map under the Menu at www.sandestin.com.





AWRA NATIONAL NEWS

The next AWRA Nationally sponsored event is the Specialty Conference in Kansas City, Missouri from May 11 to 14, 2003. The conference is on Agricultural Hydrology. Check the National WebPages for details.

If you want to keep up with the latest technology and what is happening on a national level pertaining to selected areas, check out the Technical Committees. You can easily join one or all of them and use them as informational sources. They include: Agricultural Hydrology, Aquifer Storage & Recovery, GIS & Remote Sensing, Hydrology & Environment, Hydrology and Watershed Management, Policy, Stream Ecology, Student Activities, TMDL, Wetlands, and Wildland Hydrology.

If anyone has the opportunity to read the periodical titled "Association Management", it includes an article on the AWRA. It is titled "The Right Size for Strategy", and highlights the Board of Directors. The article was written by our Executive Director Mr. Ken Reid. It is an excellent article providing a good history of the AWRA leadership.

If you have any questions or want to get more involved on a national level please call Bob Moresi, 1-813-258-8818.

– Bob Moresi

AWRA FLORIDA NEWS

➤ Our own Roy Price, USF Student Chapter (our webmaster) is being honored with a MS level award, presented by the USF Geology Alumni Association, for Outstanding Graduate Student (Richard A. Davis Endowed Fellowship awards), Association. The award will be given to Roy at a banquet on 15 February at the Florida Aquarium. Your Board voted to sponsor up to ten students to attend the banquet. **Congratulations Roy!!!!**

- The J. B. Butler Science Grant for K-12 teachers has been advertised on two grant websites: the Dept. of Education and the Governor's Mentor Grant site. If you know a teacher who might be interested please have them email Rosanne Clementi at: sesrosanne@aol.com.
- At the meeting in DeLand, David Watt conducted a raffle to raise money for our education initiatives. In addition, he conducted a silent auction for a sail boat trip with our own Captain Ron Hamel and two day passes to SeaWorld donated by Southeast Environmental Solutions, Inc. These items and the raffle raised approximately \$700.00. The money raised at this meeting was more than enough to pay for the students to attend the USF Geology Alumni Society banquet.
- Captain Ron has already agreed to donate a sailing trip to be auctioned at Key West. Patty Goodman said she would go to Europe before July on a quest to find another incredible bottle of wine. Neil Aikenhead mentioned he had a painting to donate. The silent auction last year in Key West was so much fun and we would like to repeat it and hopefully have more items to auction. Please think about something you can contribute and email Rosanne Clementi at sesrosanne@aol.com.

– Roseanne Clementi

Summary of **Board of Directors** Meeting, February 2003
By Gail L. Murray

The January board meeting was held at The Grant Bly House, Deland, FL. Provided below are highlights of some of the items discussed at the meeting.

- Incoming President, Rand Edelstein expressed his pleasure of having the opportunity of presiding over the Board this up coming year and looks forward to a prosperous and productive year. He recognized the new officers, Mike Mesiano as Vice President, Roger Rumenik as Secretary, and Allen Biddlecombs' second year as Treasurer and Ron Edenfield as a new Board member.
- Dave Watt is busy with all the renewals at the first of the year and expressed that we are still continuing to grow in membership numbers. Dave and Patrick Victor are working diligently on the production of the new Membership Directory. There has been excellent Sponsorship participation for the new directory. Patrick is working with CDM to create a new cover and is looking for ideas before the end of February. It is expected to have the new directory ready for distribution by the March meeting.
- Allen Biddlecomb, our Treasurer, advised us that the organization was doing well financially.
- Mike Cullum, chairperson for the Student Chapter Committee, will be working with others to recruit new student chapters from more of our State Colleges and Universities. If you wish to help in the effort, please contact Mike Cullum or Roseanne Clementi.
- **Website News:** For those of us who are Listserve illiterate, John Fumero, Website Committee chairperson, indicated that instructions for use of the Listserve will be forthcoming soon.
- 2003 meeting locations and chairpersons: March **21, 2003 – Destin**, Rand Edelstein and Roger Rumenik; May **16, 2003 – Tampa**, Jay Yingling; July **24-26, 2003 – Key West**, John Wehle; September **19, 2003 – Stuart**, Annette Carter and Bob Higgins; November – **Ft. Myers**, Ron Hamel and Ron Edenfield.

Will you be in the 2003 Membership Directory?

All members whose dues are current as of February 28 will be listed in the 2003 Membership Directory. We will be sending a separate communication to all of our active members to review their directory listing. You can use the application form in this newsletter to renew your membership and provide updated information for the directory. While you're at it, get a friend to join too! Feel free to contact me about your membership status or any other services AWRA can provide. Thanks for your continued support of AWRA!

David Watt, Membership Services
386-329-4355
[dwatt@sjrwmd.com](mailto:d watt@sjrwmd.com)

AND OUR SURVEY SAYS . . .

Late last year, in preparation for the board of directors' strategic planning session, we distributed a survey to our Florida Section AWRA members. The results are in, and they are most interesting!

Seventy-nine members responded to the survey; overwhelmingly, they came from the ranks of engineering and consulting firms. Palm Beach County members topped the list of respondents with 19. Beyond that, members from Hillsborough, Duval, Orange and Lee counties were the most vocal. Most of the respondents were either relatively new members or "old-timers" (22 respondents indicated that they have been members for more than a decade!).

By far, members rank professional development and career networking as the main benefits they gain from AWRA Florida Section. In addition, they find that their membership allows them to keep abreast of what is happening in the water resources arena here in Florida. Factors that most influence members' attendance at bi-monthly meetings are location and content of the technical program. Most of our members only attend 1-2 meetings annually. Many respondents indicated that holding meetings in more centrally located cities would increase the likelihood of their attendance; however, there were also a number of members who expressed their preference for convening our meetings in more out-of-the way locales. Overwhelmingly, our members are pleased with the quality of our technical presentations, keynote speakers and field trips.

On the down side, less than a third of our respondents indicated that they had participated in any student-based activities. Those that did were likely to have worked with student chapters or attended a student-focused program. This suggests that the section may want to explore ways to provide members with better access to students and opportunities for student involvement.

Members reported that they are using the AWRA Florida Section website and find it very useful; however, we also got plenty of suggestions for how to improve it as well. About 50% of the survey respondents indicated that they are also members of AWRA National. Those who are noted the opportunities for national networking and the value of technical publications. Those who are not National members indicated that the cost of membership and an inability to attend national meetings were the key factors that kept them from joining. On the bright side, many of these respondents pointed out that their experience with the Florida Section more than fulfilled their professional networking/water resource needs.

We received many excellent ideas on themes for future programs and technical meetings. There were also plenty of suggestions on how to improve our section from enhancing the advertisement of our meetings to developing an AWRA Florida Section Leadership Development Program.

In short, our members seem to be very satisfied with our section and they had lots to say about it. Thanks to everyone who took the time to respond! Your ideas were a major focus of the board's retreat, and we will be working to improve the section based on your suggestions.

Anyone wishing to obtain a complete copy of the survey results can do so by contacting Cathy Vogel at (305) 577-7722.



SPONSORS



www.biologicalresearch.com



www.ensr.com



www.urscorp.com



MEMBERSHIP DUES

2003 Membership Application

New \$10 Regular
Renewal \$4 Student

DIRECTORY INFORMATION

Please give us the information requested below, as you would like it to appear in the membership directory

Name: _____
First Middle Initial Last Suffix (Ph.D., PE, PG, etc)

Company/Affiliation: _____

Mailing Address: _____
Work Home
Box, Street or Route Suite or Apartment

City State Zip Code

Daytime Telephone: _____
Work Home

Facsimile: _____
Work Home
Area Code Area Code

E-mail: _____

MEMBERSHIP INTERESTS

Would you like to receive our newsletter via e-mail? Yes No
Are you an AWRA National Member? Yes No
If not, would you like information? Yes No
Are you interested in sponsorship opportunities? Yes No
Would you like to be part of a bi-monthly meeting team? Yes No

For membership information, please contact David Watt at 386-329-4355 or [dwatt@sjrwmd.com](mailto:d watt@sjrwmd.com)

PAYMENT INFORMATION

\$ _____ Annual dues (please indicate if you are paying for additional years)
\$ _____ Florida Section Water Resources Education Fund (tax deductible contribution)
\$ _____ **TOTAL (Please make checks payable to AWRA Florida Section, THANK YOU!)**

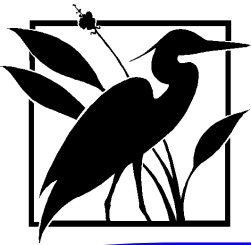
**Return this application
and your check to:**

*David Watt, Membership Services Coordinator
417 Kirby Street
Palatka, Florida 32177*

Florida Section membership dues are due January 1 and are good through December 31. Contributions or gifts to the Florida Section are deductible as charitable contributions for federal income tax purposes. Dues payments may be deductible by members as an ordinary and necessary business expense.

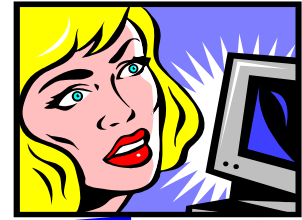
Section Use Only:

Date Received: _____ Check #: _____ Amount: _____



AWRA Newsletter Editor:

Paul W. O'Neil, Jr., P.E.
Southwest Florida Water Management District
2379 Broad Street, Brooksville, Florida 34604-6899
Phone (352) 796-7211, Extension 4341; Fax (352) 544-2328
Paul.Oneil@swfwmd.state.fl.us



**VISIT THE FLORIDA SECTION WEBSITE AT:
www.awraflorida.org**

CONTACT UPCOMING MEETING CHAIRMEN REGARDING SPONSORSHIP OR ASSISTANCE

Destin

March 21, 2003
Rand Edelstein
850-385-5006

Tampa

May 16, 2003
Jay Yingling
352-796-7211

Key West

July 24-26, 2003
John Wehle
386-329-4214

Stuart

September 19, 2003
Annette Carter
386-329-4214

Welcome New Members!

K. Dawn Blackledge, P.G., Aerostar Environmental Services, Inc.
Christopher J. Burke, CSAM, Management Recruiters Int'l.
Larry O. Carter, Foster Wheeler Environmental
Phil D'Amo, MWH
Scott Grant Evanson, P.G., MACTEC Engineering and Consulting
Frank R. Finch, P.E., Greenhorne and O'Mara, Inc.
Donna S. George, P.E., Parsons Corp., Everglades Joint Venture
David A. Hoot, Black & Veatch
Robert G. Maliva, Ph.D., P.G., Camp, Dresser & McKee, Inc.
Jeremy C. McBryan, E.I., PBS&J
Rodolpho Pacheco, URS Corporation
Alan R. Pierce, Florida Fruit & Vegetable Association
Stephen O. Rice, Malcolm Pirnie
Teri Shoemaker, P.E., PBS&J/EPJV
Ann B. Shortelle, Ph.D., MACTEC Engineering & Consulting
Joseph H. Walter, P.E., PBS&J
Todd S. Wilkinson, Environmental Services, Inc.

