

the Watershed

15th Annual Southwest Florida Water Resources Conference
Florida Gulf Coast University, Ft. Myers
November 18, 2005

Water Quality in the Caloosahatchee Basin

BOARD OF DIRECTORS

Allan H. Biddlecomb, P.G.
President
Gainesville

Robert W. Higgins, P.E.
Vice President
West Palm Beach

Patrick R. Victor, P.E.
Treasurer
Jacksonville

Cathleen Vogel
Secretary
Miami

Michael D. Mesiano
President 2004
Jacksonville

Rand Edelstein, Jr., P.G.
President 2003
Fort Myers

Annette F. Carter
Stuart

Douglas J. Durbin, Ph.D.
Tampa

Ronald M. Edenfield, P.E.
Fort Myers

John J. Fumero, Esq.
West Palm Beach

Ron Hamel
LaBelle

Carol Hinton
Gainesville

Gary K. Howalt
Jacksonville

Donald McEwen
Havana

Gail L. Murray, P.G.
Tequesta

Stephan J. Nix
Jacksonville

Paul W. O'Neil, Jr., P.E.
Tampa

David R. Watt, P.E.
Palatka

Jay W. Yingling
Tampa

Technical Program: This year's focus will be on the Caloosahatchee River Basin and the current issues related to water quality in the Basin. There are no shortages of issues this year: Lake Okeechobee release schedules (WSE), design/construction of the C-43 Reservoir, basin rulemaking, planning for stormwater utilities, blue-green algae blooms, sewage discharges, implementation of TMDLs looming, water reservations, Southwest Florida Feasibility Study, water quality modeling, and the up-and-coming "Caloosahatchee River Basin Initiative". Program Chairs, Dr. Tom Missimer, Missimer Groundwater Sciences, and Dr. Win Everham, FGCU, have a variety of speakers who will address local issues.

Attendees will include scientists, federal, state and local Regulatory Professionals, Environmental Professionals, Engineers, Geologists, Ecologists, Biologists, Planners, Jurists and other interested persons. Students are also welcome to attend and two on-the-spot scholarships will be awarded at the conference to student attendees. Students must be present to win.

Location & Accommodations: The meeting will take place in the Sprint Room in the Whittaker Building on the beautiful FGCU campus. The campus is conveniently located just east of I-75 from either exit 128 (Alico Road) from the north or exit 123 (Corkscrew Road) from the south. Please be sure to park in Parking Lot #7.

A block of rooms has been reserved at Wynstar Inn & Suites, 10150 Daniels Parkway, Fort Myers, FL 33913 (239) 791-5000 & Fax (239) 791-5001. The cutoff for this discount is November 4, 2004. Rates are \$69 plus 9% tax per night for single queen room, and \$89 +tax for double queen room.



*2005 Meetings: January 21 Palm Coast; March 18 Wakulla Springs; May 13 Lakeland;
July 28-30 Key West; September 30 Cedar Key; November 18 Ft. Myers*



The 15th Annual Southwest Florida Water Resources Conference
Florida Gulf Coast University
Friday, November 18, 2005

Water Quality in the Caloosahatchee Basin

Please visit the web link below for more information.
<http://awra.caloosahatchee.org/index.php?page=home>

(Note: Some speakers are suggested at this time.)

- 10:00 – 11:45** **AWRA Board Meeting**
- 11:45 – 1:00** **Luncheon Speaker: Trudi Williams**
The Big Pitcher
- 1:15 – 1:50** **Operational Aspect of the Big O & the C-43**
SFWMD & ACOE TBD
- 1:50 – 3:30** **Pitcher User's Perspectives**
Municipality Interest – Jim Lavender
Environmental Interest – Susan Brookman
Recreational Interest – Capt. Pete Quasius
Agricultural Interest – Hugh English
- 3:30 – 3:45** **Break**
- 3:45 – 5:00** **How Do We Keep the Pitcher Full & Clean & Healthy & Still Be Able to Fill All the Glasses – Panel Discussion**
Bev Grady
Carol Wehle (Invited) – SFWMD
Howard Wegis
Mitch Hutchcraft
- 5:00 / 5:30 p.m.** **Social Hour at Baldy's on Campus**

While there are no formal outings scheduled for Saturday, the Committee supports and suggests checking out the following:

RiverWatch is sponsoring two river-related events on Saturday and Sunday:

Saturday, November 19, 2005

Get Up, Get Out, Get Active" in LaBelle at the historic Captain Hendry House and LaBelle Nature Park, Sponsored by Hendry Co and WGPU Media, featuring nature/historic tours, fitness demonstrations, kayaking and other events. Contact organizer Mary Ruth Prouty at Mary_Prouty@doh.state.fl.us

Sunday, November 20, 2005

9th Annual River Ride Bike Ride, Caloosahatchee Regional Park in Alva to Ft. Denaud, Muse and LaBelle, organized rides from 15 to 62 miles. Contact Ride Director Kieth Kibbey at riverride@caloosahatchee.org

Southwest Florida also offers some of the finest beaches, shelling and fishing in the state. For more information on things to do in the area, visit www.leeislandcoast.com.

Should you have an interest other than those linked, i.e. fishing, kayaking, etc. let Ron or Ron know and we will hook you up. See you soon! R&R



AWRA NATIONAL NEWS

Annual Conference:

The 2005 AWRA Annual Conference will be in Seattle, Washington from November 7th through the 10th. It is being held at the Red Lion Hotel. The conference is again shaping up to be an excellent opportunity to meet old friends and exchange technical views. Check out the AWRA webpage.

Everglades Restoration Conference:

As you know the AWRA sponsored the first Everglades Restoration Conference earlier this year. It was an instant success and the second Everglades Restoration Conference is being planned for next summer. So stay tuned.

Remember to visit the national webpage or call the AWRA Headquarters at 1-540-687-8390. Anyone there will be glad to help you. Again, thanks.

Bob Moresi
Past President

AWRA FLORIDA NEWS

- Board of Directors Summary
- Technical Program Summary
- Education Committee Report
- 2006 Membership Dues
- Announcements

Board of Directors Summary – Cedar Key

- by David Watt

President Allan Biddlecomb called the Florida Section Board of Directors meeting to order on Friday, September 30th shortly after 11:00 AM. Patrick Victor reported our treasury is in good shape, which enabled the board to approve funding for six \$1,000 Storch awards and two \$500 Butler awards. The Board and Education Committee is interested in alternative ways to help Education Committee Chairperson Rosanne Clementi reach out to educational institutions to take advantage of our grants. Work continues to raise funds and develop criteria for the new Sandy Young scholarship. The Sandy Young fund balance is about \$12,000 thanks to many individual donations and several fundraisers.

David Watt reported our membership remains strong with close to 300 members, including four new regular and five new student members since our last meeting. Annette Carter will assume the responsibilities of Membership Committee Chair for 2006 (*the 2006 membership application is contained elsewhere in this newsletter and reflects this change*). There was a lengthy discussion regarding the Florida Section's support of student chapters and support of individual student members presenting papers or otherwise wanting to attend AWRA National's conference in Seattle. Other discussions included improvements to our website to keep it current, the ballot for electing the 2006 Board of Directors and the audit of our books as treasury responsibilities change hands next year.

Information on future meetings was provided, with the next meeting of the Florida Section to be held in Ft. Myers on November 18th (*other dates and chairpersons for future meetings are listed on the back page of this newsletter*). The Board would like the meetings to be chaired, or co-chaired, by a member who is not currently on the Board to encourage additional leadership within the section.

Members are encouraged to attend the annual meeting of the National organization in Seattle, Washington, November 7-10. The board traditionally subsidizes the Vice President's attendance at the conference. Vice President Higgins will attend the conference, but declined the subsidy, and suggested that the money be used to support student members' attendance at the conference.

Technical Program Summary

- by Jay Yingling

Low Impact Development (LID) Overview, James Heaney, University of Florida

Mr. Heaney indicated that the focus of LID is now on design for micro-storms with a frequency of .1 to 2 year frequencies and the avoidance of concentration of stormwater flows by addressing on-site conditions. Modern development patterns that concentrate flows began in the 1930s when federal home lending practices emphasized impervious surface dedicated to transportation (driveways, wide streets and curb and gutter). Such patterns

required centralized stormwater transport, storage and treatment. LID seeks to keep stormwater on-site as much as possible through various infiltration and other BMPs that can reduce the cost of improving stormwater quality on their own or in combination with centralized systems. However, BMPs associated with LID still require maintenance, are more difficult to model and may not always be successful in high water table environments common in Florida.

Tumblin' Creek Watershed Management Plan, Brett Cunningham, Jones Edmunds and Associates

The Tumblin' Creek watershed in Gainesville was developed prior to modern stormwater regulation and discharges to a waterbody that will likely be listed as impaired. The city wants to redevelop and increase density in a portion of the watershed, which will require addressing past and future development. Addressing stormwater issues will require regional and localized quantity and quality modeling, identification of existing and alternative BMPs and stream morphology analysis. High property values and compensation requirements limit regional treatment options, so a blend of local and regional options will be needed to accommodate redevelopment and pending TMDLs. Local retrofit alternatives may include options such as changing parking islands from raised to depressed, creating pocket parks, and removing leaf loadings from residential neighborhoods.

Tumblin Creek LID, Ruben Keretsz, University of Florida

An advantage of the redevelopment of the watershed is that it is in a redevelopment district that allows for localized rules and enforcement that are amenable to LID. LID practices that have been used in the Anacosta area of Washington such as green roofs, retention parks and rain gardens are being evaluated for application in Tumblin' Creek. Many practices are yet to be evaluated. Being a redevelopment district makes the watershed an ideal LID study site.

SRWMD LID Permitting Perspective, John Dinges, SRWMD

Mr. Dinges provided an overview of the intent and details of the rules governing storage and treatment of stormwater in the SRWMD. He stressed that there are practices that are presumed to meet criteria but they welcome and will review creative solutions. Important considerations in getting an LID project through include the disallowance of ditch/swale blocks, accurate seasonal high water table analysis and deed restrictions to avoid secondary impacts.

BMP Effectiveness, John Sansalone, University of Florida

Mr. Sansalone provided an overview of historical rainfall and runoff controls, the importance of aqueous and particulate chemistry, unit operation and process concepts, examples of in situ partial exfiltration, and the importance of particulate size. Some storms may not have classic "first flush" characteristics and that must be taken into design consideration. Reuse of treatment residuals is an important consideration as well.

Urban Impact to Soil, Justin Gregory, Jones Edmunds and Associates, Inc.

This project involved pre and post-development measurements of infiltration rates at LID home sites. Results in construction areas showed a 70-80% reduction in infiltration rates due to compaction – enough to keep plants from rooting properly and increase runoff rates to near impervious surface levels. Mr. Gregory suggested that natural vegetation should be preserved and kept off limits from construction equipment and traffic. Construction areas should be remediated after compaction, through tilling and amendments. He also suggested that developers should receive some type of credit for better site development practices that reduce or mitigate the impacts of compaction to maintain infiltration.

Education Committee Report

- Rosanne Clementi

The Board of Directors approved the award of the JB Butler Science Grant to Martin Roberts, Freshman/Sophomore Biology, St. Francis Catholic High School, Gainesville and to Tina Sargent, 5th Grade Teacher and Margaret England, Media Specialist, LaBelle Elementary School, LaBelle. Congratulations to these teachers for their interest in further water resource education and their schools for having these motivated teachers.

There is still money available this year for K-12 Science teachers to receive JB Butler Science Grants. Please email or call Rosanne Clementi, (813) 752-1289; rclementi@sesi.cc

The Board approved a William V. Storch Award to the following students:

FSU: Christopher Rawl

USF: Lindsay Griffen and Kelly Gleaton

UF: Michael Zelazo, Ondine Wells, and Stuart Muller

Congratulations to these students and their universities for the excellent work in water resource sciences. Any other applications this year for the William V. Storch Award will be held and considered for March 2006.

We have raised almost \$12,000.00 for the Sanford N. Young Scholarship. The Board of Directors will gather information regarding investment opportunities with these funds. The goal of the Section is to have the scholarship fund yield interest/dividends on which future scholarships will be funded. We will provide you an update in the next newsletter.

Its Time to Renew Your Membership for 2006!

Florida Section membership dues for 2006 are due January 1st. Please use the membership application form in this newsletter, or the one on our web page at www.awraflorida.org. **Please note that regular membership dues have increased to \$20.** Student memberships remain at \$4. Also note on the application form, our new Member Services Coordinator for 2006 will be Annette Carter. Please be patient with her as she takes on this important responsibility. Thank you for your continued support of water resources education through AWRA!

AWRA National Conference

For information on the National Conference, please go to <http://www.awra.org>.

You will find information on the following:

Red Lion Hotel, Seattle, Washington
November 7-10, 2005
Meeting Registration – Online/Mail-In
Letter of Invitation Guidelines
Author / Presenter Information

2006 Meeting Dates & Coordinators

Jan 13 – Jacksonville; Steve Nix (904-620-1390) and Michael DelCharco (904-731-9847)
Mar 17 – Wakulla Springs; Don McEwen (850-539-9508) and Bill Stimmel (850-668-8079)
May 19 – Tampa/St. Petersburg; Jay Yingling (352-796-7211 x4336)
July 13-15 – Key West; John Wehle (561-253-4309) or Margi Hightower (386-329-4214)
Sep 15 – Delray; Patti Lodge (561-254-1792) and John Fumero (561-640-0820)
Nov 17 – Ft. Myers; Ron & Ron

AWRA Florida Section Meeting - January 13, 2006

The first Section meeting for 2006 will be held January 13th on the beautiful University of North Florida campus in Jacksonville. The theme for the day is “Benefits and Costs of Beach Renourishment and Inshore Dredging” with noted speakers addressing the technical, economic and environmental issues of each. The technical program will be followed by a social hour and dinner, with a guest speaker addressing the issue of hurricane preparedness in NE Florida. A field trip is planned to the Guana River State Park the morning of Saturday, January 14. More details will appear in the November and December newsletters. We hope to see you in Jacksonville! For more information contact Steve Nix at 904-620-1390 or snix@unf.edu.

15th Annual Southwest Florida Water Resources Conference November 18, 2005; Ft. Myers, Florida

For more information, please visit this web link: <http://awra.caloosahatchee.org/index.php?page=home>

Please note that the site is being hosted and maintained by:
Dr. John C. Capece, Southern DataStream, Inc., 132 North Lee Street, LaBelle FL 33935
Capece@SouthernDatastream.com • www.SouthernDataStream.com
tel: 863-674-5727 • fax:863-675-1233 • efax: 561-828-8458

15th Annual Southwest Florida Water Resources Conference

Sponsors

Lewis, Longman & Walker, PA

Wilson – Miller

Gulf Citrus Growers Association

Environmental Consulting & Technology, Inc.

Sponsoring Organizations

Florida Section, American Water Resources Association (AWRA)

Calusa Chapter, Florida Engineering Society (FES)

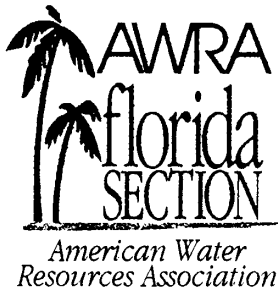
The American Society of Agricultural Engineers (ASAE)

Audubon of Southwest Florida (ASWF)

Caloosahatchee River Citizens Association (RiverWatch)

South Florida Water Management District (SFWMD)





2006 Membership Application

MEMBERSHIP DUES

New \$20 Regular
 Renewal \$ 4 Student

DIRECTORY INFORMATION

Please give us the information requested below, as you would like it to appear in the membership directory.

Name: _____
First Middle Initial Last Suffix (Ph.D., PE, PG, etc)

Company/Affiliation: _____

Mailing Address: _____

Box, Street or Route Suite or Apartment

City State Zip Code

Daytime Telephone: _____ Alternate Telephone: _____
Area Code Area Code

Facsimile: _____
Area Code

E-mail: _____

MEMBERSHIP INTERESTS

Would you like to receive our newsletter via e-mail? Yes No
 Are you an AWRA National Member? Yes No
 If not, would you like information? Yes No
 Are you interested in sponsorship opportunities? Yes No
 Would you like to be part of a bi-monthly meeting team? Yes No

SPONSOR/RECRUITER: _____

PAYMENT INFORMATION

\$ _____ Annual dues (please indicate if you are paying for additional years)
 \$ _____ Florida Section Water Resources Education Fund (tax deductible contribution)
 \$ _____ **TOTAL (Please make checks payable to AWRA Florida Section, THANK YOU!)**

Return application & your check to: **Annette Carter, Membership Services Coordinator**
c/o Tetra Tech EC, Inc.
759 South Federal Highway, Suite 100
Stuart, Florida 34994

Florida Section membership dues are due January 1 and are good through December 31. Contributions or gifts to the Florida Section are deductible as charitable contributions for federal income tax purposes. Dues payments may be deductible by members as an ordinary and necessary business expense. For membership information, please contact Annette Carter at Annette.Carter@tceci.com or (772) 781-3403.

Section Use Only:

Date Received: _____ Check #: _____ Amount: _____

Wynstar Inn & Suites

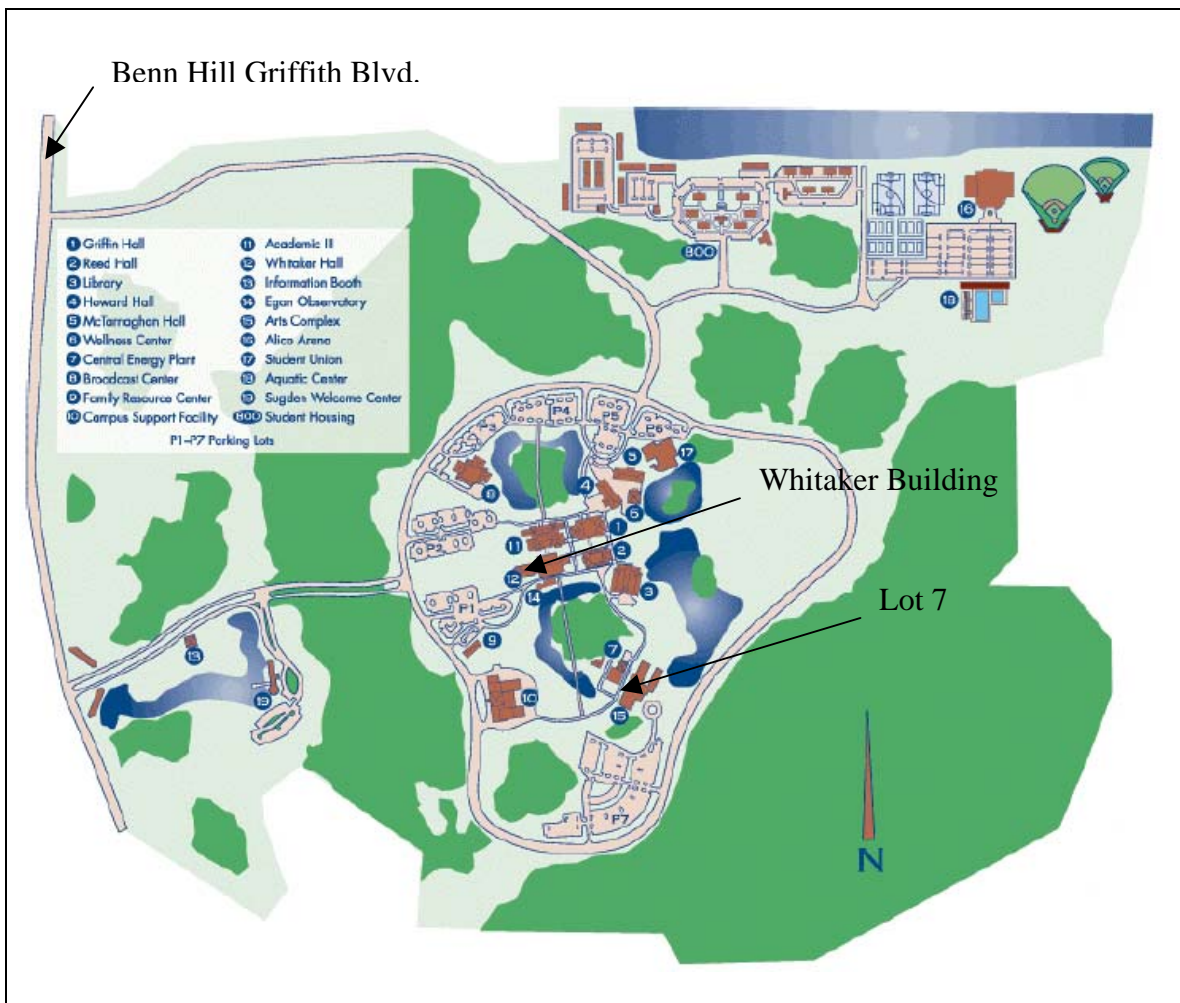
A block of rooms has been reserved at Wynstar Inn & Suites, 10150 Daniels Parkway, Fort Myers, FL 33913 (239) 791-5000 & Fax (239) 791-5001. The cutoff for this discount is November 4, 2004. Rates are \$69 plus 9% tax per night for single queen room, and \$89 +tax for double queen room.

Wynstar Inn and Suites is a brand new, up-scale, non-smoking, limited service hotel. Wynstar is conveniently located next to I-75, 2.5 miles away from Regional Southwest Airport and minutes away from area beaches, Teco Arena and the Minnesota Twins training facility. We offer clean, comfortable rooms at reasonable rates. Choose from one of our many room types including king studios and two room suites. On site there are meeting rooms, a fitness center, heated pool and rental car service.



Meeting Location: Florida Gulf Coast University - Sprint Room/Whittaker Building

The meeting will take place in the Sprint Room in the Whittaker Building (#12) on the beautiful FGCU campus. The campus is conveniently located just east of I-75 from either exit 128 (Alico Road) from the north or exit 123 (Corkscrew Road) from the south. Please be sure to park in Parking Lot #7.



The 15th Annual Southwest Florida Water Resources Conference

Friday, November 18, 2005

11:45 a.m. – 5:00 p.m.

Florida Gulf Coast University

Ft. Myers, Florida

Registration Form

Meeting Registration Deadline – November 10, 2005

Hotel Reservations Deadline – November 4, 2005

Name _____

Organization _____

Mailing Address _____

Phone _____

E-Mail _____

Guest Name _____

Registration includes Conference & Lunch. Note: AWRA Florida Section Board Meeting is 10-11:45 a.m.

Make checks payable to AWRA Florida Section and mail to:

R. M. Edenfield, P.E.	Registration (Includes Lunch)	\$50	X \$xx =	\$
Environmental Consulting & Technology, Inc.	Students	\$10	X \$xx =	\$
4100 Center Pointe Dr, Ste 112	Student Sponsorship*	\$10	X \$xx =	\$
Ft. Myers, FL 33916				
redenfield@ectinc.com				
	TOTAL			\$

Number attending the Board Meeting _____

* You may sponsor a student to attend the event by paying their registration fee. We will include your name with a thank you in the program brochure. If you wish to do this, please include the number of students you wish to sponsor. You may designate the student(s) or you may allow them to be used on a first come, first served basis.

PDH Credit for Florida Professional Engineers

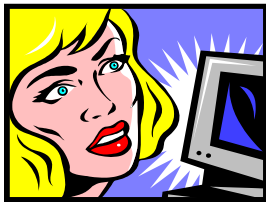
We have been approved by the Florida Board of Professional Engineers (FBPE provider # EX00089) to offer Professional Development Hour (PDH) credit to Florida registered Professional Engineers. You will only receive credit if you attend the entire technical session. Please check the box below and include your PE number if you would like to obtain PDH credit.

I plan to be present for all technical sessions and would like PDH credit.
My PE number is _____.



AWRA Newsletter Editor:

Paul W. O'Neil, P.E., Director
Technical Services Department
Southwest Florida Water Management District
2379 Broad Street, Brooksville FL 34604-6899
Phone (352) 796-7211 • Fax (352) 544-2328
Paul.Oneil@swfwmd.state.fl.us



VISIT THE FLORIDA SECTION WEBSITE AT:
www.awraflorida.org

☞ Contact Upcoming Meeting Chairmen Regarding Sponsorship or Assistance ☞

Ft. Myers
November 18, 2005
Edenfield & Hamel
941-277-0003

Jacksonville
January 13, 2006
Michael DelCharco
904-620-1390

Wakulla Springs
March 17, 2006
Don McEwen
850-539-9508

Tampa/St. Pete
May 9, 2006
Jay Yingling
352-796-7211 x4406

Welcome New Members!

Elizabeth L. Bevc, University of Florida student, Gainesville
James S. Bradbury, CH2M Hill, Bonita Springs
Kristin E. Honk, University of Florida student, Gainesville
Paul A. Indeglia, University of Florida student, Gainesville
Gareth A. Kerr, University of Florida student, Gainesville
Suzanne M. Moellendorf, University of Florida student, Gainesville
Katherine M. Mouzakis, University of Florida student, Gainesville
Alessandra M. Pozsonyi, University of Florida student, Gainesville
Matthew D. Rembold, University of Florida student, Gainesville

